

HEAVENLY

Sword[®]

TM

Copyright Heavenly Sword Productions, LLC
"PlayStation" and the "PS" Family logo are registered
trademarks of Sony Computer Entertainment Inc.
Heavenly Sword ©2013 Sony Computer Entertainment
Europe. Heavenly Sword is a trademark of Sony Computer
Entertainment Europe. All rights reserved.



FILM SUMMARY

Heavenly Sword is a dramatic tale of revenge that sees Nariko (Anna Torv), a fiery red-haired heroine, embark on a quest for vengeance against the invading King Bohan (Alfred Molina) and his army. Once considered the failure of a legendary prophecy, Nariko must wield a sword that was ultimately meant for another. This ancient Heavenly Sword, once belonging to a powerful deity, can never be wielded by a mortal without it slowly and inevitably killing them. For Nariko, it is a race against time to avenge her clan before her life is irreparably overtaken by the omnipotent Heavenly Sword.

THE HEAVENLY SWORD

A weapon of immense power believed to have been wielded by an unnamed Heavenly deity against a demonic warlord called the Raven Lord. After the battle was won and the Raven Lord defeated, the sword was left in the mortal world, becoming the center of wars over its power. The fighting made the sword lust after the life of its users, and the use of the sword became a curse, eventually leaving each wielder dead as its power grew.

A warrior tribe finally took charge of the sword, ending the wars and pledging to keep it safe and unused for the world's own good. Among the tribe, a legend said that the sword's original wielder (the so-called "chosen one") would be reborn in the Year of the Fire-Horse, and that this figure would unite the world's scattered tribes and lead the world to peace.



ANNA TORV

Anna Torv is an Australian born actress best known for her role as Agent Olivia Dunham on the hit television series, Fringe. She has also appeared in numerous other television productions including HBO's mini-series The Pacific as Virginia Grey. Anna has been nominated five times for the Saturn Award for Best Television Actress from 2009 to 2013, winning a total of four times. Recently, it was announced that Anna is returning to HBO in Ryan Murphy's pilot "Open". Before making her mark in television, Anna Torv voiced the title character, Nariko, in Sony PlayStation's Heavenly Sword video game.

NARIKO

Nariko was born in what is known as the Year of the Fire-Horse. According to prophecy, a male was destined to be born that year and lead their clan into unprecedented era of peace and prosperity. However, when a girl- Nariko- was born, and her mother died shortly thereafter, the tribe believed the gods had forsaken them, and that they were cursed, doomed to impending destruction. Nariko became a pariah among her own people. Takashi, her father's priest, was the only tribesman who seemed to care for her. He tutored Nariko in the ways of the warrior, and she would prove to be an excellent pupil, to the point where she became the best fighter in the tribe.

Although she is not the "chosen one" of prophecy, Nariko proves her valor and bravery in battle, and is ultimately tasked with keeping the Heavenly Sword away from King Bphan. But eventually she is forced to wield the Heavenly Sword while trying to escape King Bohan and his forces--and from that moment on, her destiny is inexorably linked to that of the Heavenly Sword.



KING BOHAN

King Bohan is the ruler of the land where *Heavenly Sword* is set. Most clans have either been destroyed or have joined the ranks of Bohan in the previous years, and the only tribe that stands between Bohan and world domination is Shen's clan that has spent centuries concealing the Heavenly Sword. King Bohan derives his power from an evil being known as the Raven King, and, according to destiny, the only one with power strong enough to defeat the Raven King is the wielder of the Heavenly Sword. Thus, Bohan has made it his life's quest to retrieve the Heavenly Sword and kill any who could possibly be fated to wield it, so that he may rule the world forever.

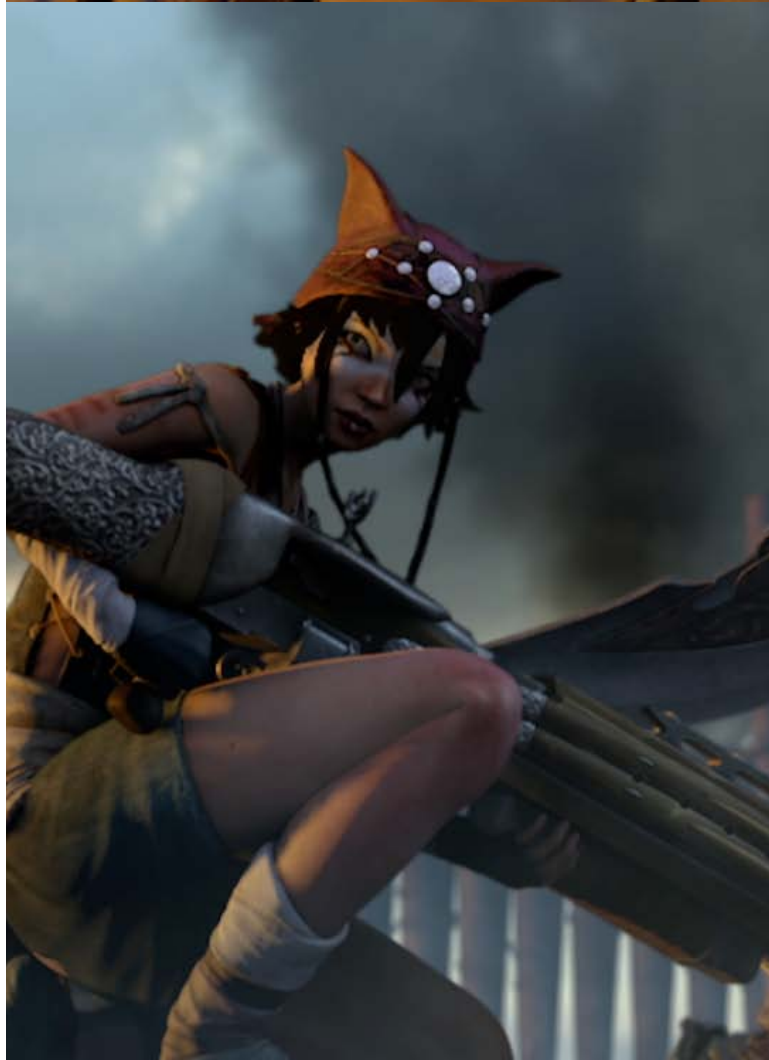


ALFRED MOLINA

Alfred Molina is a British actor known for his roles in *Raiders of the Lost Ark*, *Prick Up Your Ears*, *The Man Who Knew Too Little*, *Spider-Man 2*, *Maverick*, *Species*, *Not Without My Daughter*, *Chocolat*, *Frida*, *Steamboy*, *The Hoax*, *Prince of Persia: The Sands of Time*, *The Da Vinci Code*, and *The Sorcerer's Apprentice*. He has recently starred as Detective Ricardo Morales on the NBA television series, *Law & Order: LA*, and on the BBC sitcom *Roger & Val Have Just Got In*.

KAI

The adopted sister of Nariko, Kai possesses a child-like outlook on life, and is the last surviving member of one of the many clans wiped out by King Bohan during his conquests. Nariko found Kai in the wilderness shortly after Kai escaped a villain called Flying Fox, who, under orders from King Bohan, was responsible for the death of her mother. Accepting her as one of their own, Nariko's tribe welcomed Kai into their ranks. Both believed to be outcasts, Nariko and Kai developed a sisterly affection toward one another, with Nariko watching out for Kai and Kai looking up to Nariko. Proving herself to be a true warrior in her own right, Kai eventually learns that Nariko is, in fact, her true sister, as Shen is father of both of them.



LOKI

An orphan born at the tail end of the Year of the Fire-Horse, Loki grew up among foster parents in a remote village, where he apprenticed as a blacksmith. Loki eventually goes into King Bohan's employ, in his fortress, and upon a chance meeting with Nariko and Kai, he learns that he is, in fact their half-brother, as they all share Shen as their father. Since he is a boy from Shen's clan, born in the Year of the Fire-Horse, they realize that Loki is, in fact, the true "chosen one."

THOMAS JANE

Thomas Jane is an American actor best known for his roles in *The Crow: City of Angels*, *The Thin Red Line*, *Thursday*, *Magnolia*, *Boogie Nights*, HBO's hit *61**, *The Punisher*, *The Mist*, and the HBO hit television series, *Hung*.



THE SETTING OF HEAVENLY SWORD

The world of Heavenly Sword is a beautifully rendered fantasy realm that is heavily influenced by ancient Asian architecture and landscapes, with a mix of European technologies and accents. Centuries old, this world, from villages to castles, breathes magic and fantasy from every corner.

This is Korean Director Gun Ho Jang's first international film.





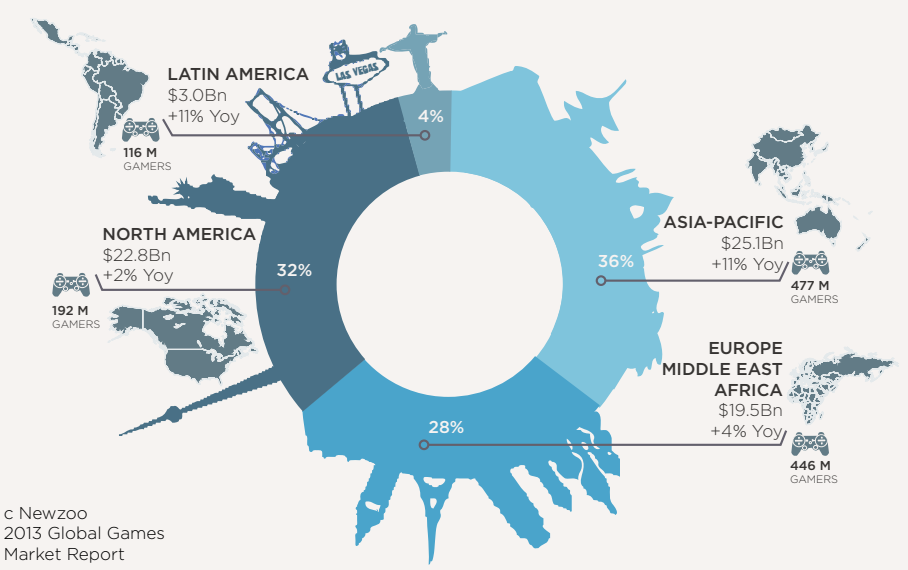
“SOME OF THE TOP REASONS WHY GAMERS SAY THEY PURCHASE A COMPUTER OR VIDEO GAME: QUALITY OF GAME GRAPHICS, AN INTERESTING STORYLINE, A SEQUEL TO A FAVORITE GAME, WORD OF MOUTH”

-Entertainment Software Association

MARKET LANDSCAPE: VIDEO GAME REVENUES WORLDWIDE

HEAVENLY SWORD WAS A LAUNCH TITLE FOR THE PLAYSTATION 3 GAME CONSOLE, AND WENT ON TO BECOME ONE OF THE COMPANY'S BEST SELLING GAME TITLES.

The Global Games Market | Per Region | 2013E



Video Game Movies by

Highest Box Office Gross

- \$131,168,070 Lara Croft: Tomb Raider
- \$90,759,676 Prince of Persia: The Sands of Time
- \$70,454,098 Mortal Kombat
- \$65,660,196 Lara Croft Tomb Raider: The Cradle of Life
- \$60,128,566 Resident Evil: Afterlife

Highest Opening Weekend

- \$47,735,743 Lara Croft: Tomb Raider
- \$30,095,259 Prince of Persia: The Sands of Time
- \$26,650,264 Resident Evil: Afterlife
- \$23,678,580 Resident Evil: Extinction
- \$23,283,887 Mortal Kombat



THE HEAVENLY SWORD TEAM



TRICOAST WORLDWIDE

Part of the TriCoast group of companies which has been in business since 1987. TriCoast Worldwide is the sales and distribution arm of the company and is managed by Co Chief Executives Strathford and Marcy Levitas Hamilton. With over forty films and three television series in distribution, TriCoast Worldwide is expanding into digital distribution and film financing. TriCoast Worldwide is proud of their partnership with Blockade Entertainment on Heavenly Sword, and looks forward to participating in the emerging market of turning successful video games into major motion pictures.



BLOCKADE ENTERTAINMENT

Blockade is an independent production company that creates and produces original and licensed content for film, television, and digital platforms. Past productions have included Lego Batman, Lego Star Wars, and Dante's Inferno. Blockade is currently in production on Ratchet and Clank, a CG-Animated theatrical film based on the hit Sony PlayStation video game franchise, and has just completed Heavenly Sword, a CG-Animated film also based on a Sony PlayStation video game franchise. www.blockade.com

PlayStation™ PLAYSTATION WORLDWIDE STUDIOS

PlayStation Worldwide Studios, (also referred to as Sony Computer Entertainment Worldwide Studios), is a group of video game developers owned by Sony Computer Entertainment which was established in 2005. It is a single internal entity overseeing all wholly owned development studios and franchises within SCE. The group is responsible for the creative and strategic direction of development and production of all computer entertainment software by all SCE-owned studios, all of which is produced exclusively for the PlayStation family of consoles.



FILM FINANCIAL SERVICES

Film Financial Services is a 28 year-old investment banking firm specializing in the international co-financing of feature films for Hollywood studios and independents. FFS recently has financed several films based on Sony PlayStation video game franchises and is especially busy with China co-productions where they have 7 films in various stages of production including large-budget live action films. Based in Seattle, and backed by tech investors, FFS has various funds and strategic partnerships internationally, including one with China's third-largest media company, Jiangsu Broadcasting Corporation.

SSV 산수벤처스 SANSOO VENTRUES INC.

Sansoo Ventrues Inc. is a venture capital based in Seoul, Korea. We provide capital for entertainment and media businesses committed to value growth of our partners. Our investment professionals have over 15years of exclusive experience and currently manage 87M(USD) assets. Since established in 2010, Sansoo Ventures Inc. has executed 170M(USD) in 148 deals, anchoring heavy portfolios within motion pictures around the globe.

CAST & CREW

TRICOAST WORLDWIDE

IN ASSOCIATION WITH
PLAYSTATION WORLDWIDE STUDIOS
FILM FINANCIAL SERVICES
SANSOO VENTURES, INC.

PRESENTS

A BLOCKADE ENTERTAINMENT
PRODUCTION

ANNA TORV

ALFRED MOLINA

THOMAS JANE

NOLAN NORTH
BARRY DENNEN

ASHLEIGH BALL
RENAE GEERLINGS

MUSIC COMPOSED BY
Justin Michael LaVallee

EDITED BY
Nicholas D. Johnson
Alex McDonnell
CG Supervisor
Hongchan Kim

EXECUTIVE PRODUCERS
Kevin Munroe
Riley Russell
Mark Green

EXECUTIVE PRODUCERS
James Shepard
Stacy Burstin
Strathford Hamilton
Marcy Levitas Hamilton

EXECUTIVE PRODUCERS

David Sheldon
Kim Hyun Woo
Yongkook Bae

PRODUCED BY
Brad Foxhoven
David Wohl

SCREENPLAY BY
Todd Farmer

BASED ON THE HEAVENLY SWORD VIDEO
GAME FRANCHISE FROM

SONY COMPUTER ENTERTAINMENT

DIRECTED BY
Gun Ho Jang

CAST

Nariko
King Bohan
Loki
Kai
Prophet Takashi
Master Shen
Kyo
Roach
Flying Fox
Whiptail
Anna Torv
Alfred Molina
Thomas Jane
Ashleigh Ball
Barry Dennen
Nolan North
Nolan North
Nolan North
Barry Dennen
Renae Geerlings

PLAYSTATION WORLDWIDE STUDIOS

EXECUTIVE PRODUCERS
James Shepherd
Mark Green
Riley Russell

ART/ANIMATION CONSULTANTS

Matt Bagshaw
Martin Binfield
Lisa Harmon
Dialogue Editor
Jon Ashley

ADDITIONAL STORY CONSULTATION

Jon Ashley
Bart Yates
Ben Hibon
Mark Green
James Shepherd

AZ WORKS STUDIOS

HEAD OF PRODUCTION / MICHAEL KIM
(JUNGSANG KIM)

CG Supervisor / Hongchan Kim(김홍찬)

Art Director / Edward Lee(이동윤)

Heedong Kim / Production lead manager

Lead Supervising Producer / Hoseoung Lee

Supervising Producer / Paekcheol Kim

Head of Production Academy / Imsik Ok

ART & DESIGN DEPARTMENT

Senior Concept Artist / Hyoju Ban(반효주)

Concept Artist / Haeryong Jo(조해룡),
Minjung Hong(홍민정), Sojung Jung(정소정)

Storyboard Artist / Seungju Kim(김승주)

Assistant Concept Artist / Sungbae Park(박성배),

Additional Concept Artists / Hyeonggu
Yun(윤형구), Hyeukil Gwon(권혁일), Daeun
Kim(김다운)

MODELING DEPARTMENT

Lead Creature Modeler / Hongchan Kim(김홍찬)

Creature Modeler / Youngjune Yun(윤영준),
Jaeseok Bae(배재석)

Lead Environment Modder / Yoosung Shin(신유성)

Environment Modeler / Jihoon Kim(김지훈),
Seonmi Lee(이선미),

Assistant Environment Modeler / Junha Kim(
김준하), Kipyoo Kim(김기표)

Additional Modeler / Seonghyun Kim(김성현),
Hyeung Kim(김형), SangHyeuk Yun(윤상혁),
Choonwoo Lee(이춘우), Soowon Hong(홍수원)

SET UP DEPARTMENT

Set Up Technical Artist / Junho Choi(
최준호), Jihoon Jung(정지훈)

Additional Setup Technical Artist / Jonggu
Yeo(여종구)

TEXTURE SHADING DEPARTMENT

Lead Texture and Shading/ Kyoungho Ko

Texture Shading Artist / Jiyun Choi(
최지연), Hyunjin Kim(김현진), Seonha Park(
박선하), Hyeelim Son(손혜림)

Assistant Texture Shading Artist / Inho
Lee(이인호)

Additional Texture Shading Artists /
Kyeongho ko(고경호), Jeongeue Sung(
성정은),

LAYOUT DEPARTMENT

Layout Supervisor / Gun Ho Jang

Layout Lead / Donghyun Yoon

Lead Texture and Shading/ Kyoungho Ko

Layout Artist / Eugene Seo(서유진),
Hyunjin Bae(배현진), d, h Yoon(윤동현),
Junghee Lim(임정희), Jiyeon Han(한지윤)

Additional Layout Artists / Dowon Jung(
정도원)

ANIMATION DEPARTMENT

Lead Animator / Byeongmin Jeong(정병민)

Animator / Junchul Park(박준철), Minwoog
Park(박민욱), Jiyoung Kim(김지영),
Junyoung Park(박준영), Jaehyung Park(
박재형), Hyunju jo(조현주), Kanghyun Jo(
조강현),

Assistant Animator / Donggeon Kim(
김동건),

Additional Animation Artists / Sangjin
Moon(문상진), Kimin Gwak(곽기민),
Gapchang Kim(김갑창), Jaesun Lee(이재선)

MOTION CAPTURE DEPARTMENT

Motion Capture Supervisor / Gunho Jang
Motion Capture Choreography / Hyeunsoo
Lee

MOTION CAPTURE PERFORMANCE ARTIST

Lead Artist
Eunsoo Lee

SENIOR ARTISTS

Youngyeon Hwang
Kwonchul Sung
Jusik Jun
Hyunjin Jun
Susuk Baek
Areum Kim
Aram Kim
Hyorim Lee
Sora Baek
Ikjun Choi

MOTION CAPTURE TD

Rikki Jung

MOTION CAPTURE ASSISTANT

Eugene Seo
Hyunjin Bae

CLOTH SIMULATION

Artist / Jaehyung Park(박재형)
Assistant Artist / Wonju Lee(이원주),
Hyomin Kim(김효민), Jonghwan Lee(
이종환)

FX DEPARTMENT

Senior FX Artist / Sunghun Cha(차성훈),

FX Artist / Seungtaek Noh(노승택),
SangWook Kim(김상욱), Sehwa Kim(
김세화)

Assistant FX Artist / Jeonghun Park(
박정훈)

Additional FX Artists / Seonghwan Kim(
김성환), Janghyung Kim(김장형),

LIGHTING DEPARTMENT

Senior Lighting Artist / Cheolhan Park(
박철한), Taerin Lee(이태린)

Lighting Artist / Jeongwan Park(유정완),
Hyobin Jung(정효빈),

Assistant Lighting Artist / Yongjik Kim(
김용직), Geon Lee(이근), Taeseob Kim(
김태섭), Seona Lim(임선아),

Additional Lighting Artists / Kieun Kim(
김기은), Jiyeon Han(한지윤)

LIGHTING TDs

Hongchan Kim(김홍찬), Cheolhan Park(
박철한), Jeongwan Park(유정완),

RENDERING TDs

Juhwan Oh(오주환), Jonghwan Moon(문종환)

MATTE PAINTING DEPARTMENT

Senior Matte Painter / Hyoju Ban(반효주)

Matte Painter / Haeryong Jo(조해룡),
Minjung Hong(홍민경), Sojung Jung(정소정),

Assistant Matt Painter / Sungbae Park(박성배),

Additional Matt Painter / Hyeukil Gwon(권혁일), Daeun Kim(김다은)

COMPOSITION DEPARTMENT

Senior Compositor / Hyunjung Baek(백현정)

Compositor / Sora Kwon(권소라),
Seunghun Lee(이승훈), Daeun Kim(김다은),
Juhyun An(안주현)

Additional Compositor / Seongok Kim(김성옥)

Editorial Artist / Bohee Lim(임보희)

POST PRODUCTION

Lead Digital Colorist / Jongchan Na(나종찬)

Digital Colorist / Byeongwook No(노병욱)

RESEARCH AND DEVELOPMENT DEPARTMENT

Technical Director / Juhwan Oh(오주환)

Research and Developer / Gwangha Yu(유광하), Jonghwan Moon(문종환)

Additional Technical Director /
Youngwook Han(한영욱)

DATA ASSEMBLING DEPARTMENT

Assembler / Changmin Lee(이창민),
Sungyong Han(한성용) Jinchul Kim(김진철),
Jinsu Kim(김진수), Yoojin Hyun(현유진),
Jinsung Kim(김진성), Deokmoon Jung(정덕문),
Sunggu Jo(조성구), Moonjung Choi(최문경),
Changmin Son(손창민), Sungrae Hong(홍성래),
Eunjung Gu(구은정),
Seunghwan Lee(이승환), Amada Satalgi Varnia

SYSTEM DEPARTMENT

System Engineer / Linsang Park(박린상)

PRODUCTION DEPARTMENT

Associate Producer / Seonghyun Kim(김성현)

Associate Producer / Jisun Lee(이지선)

Project Manager / Minkyu Lee(이민규)s

Coordinators / Soohyun Lee(이수현)

Assistant Coordinators / Aeyoung Kim(김애영)

Additional Production Manager / Chanjin Kim(김찬진),
Samuel Gil(길병준),

Head of Production / Heedong Kim(김희동)

HUMAN RESOURCES

Head of Human Resources / Minchul Kim(김민철),

Accountant / Wookyung Min(민우경)
Human Resources Staff / Mina Kim(김민아),
Kyungchun Lee(이경춘), Dohyun Kim(김도현)

SPECIAL THANKS TO

Character Texture / Chulhyun Yun(윤철현),
Youngmi Kim(김영미), Jiyoung Jang(장지영),
Miyoung Park(박미영)
FX R&D / Youngjun Park(박영준)
Motion caption actors / Eunsoo Lee(이연수),
Kwonchul Sung(성권철), Jusik Jun(전주식),
Youngyoon Hwang(황영윤), Hyunjin Jun(전현진),
Susuk Baek(백수석), Areum Kim(김아름),
Aram Kim(김아람), Hyorim Lee(이효림),
Sora Baek(백소라), Ikjun Choi(최익준)
Motion Capture Technical Counsel / Rikki Jung(정희석)

동서대학교 (ANI-MOTION)

3D Fusion R&D Center, Animotion DSU
Production Executive Producer / Eeljin Chae(채일진),

Production Director / Kihong Kim(김기홍),
Kyudon Choi(최규돈)

Animation Supervisor / Chulyoung Choi(최철영)

Animator / Kwang Min Lee(이광민), Young Nam Son(손영남),
Malg Eum Lee(이말음), 굴림 Qu Lin(굴림),
Hayejin Kim(김하예진), Production Accountant / Hyejin Lee(이혜진)

POPORO

Animation Supervisor / Guenmo Kim(김근모),

Animator / Hyewon Park(박혜원),
QU QIANG, YANG XING HUA, ZHENG ZHONG BO

“THE LEGEND OF THE SWORD” SEQUENCE

Andrew Morgan
Bastian Kemmerich

DIRECTOR

Ben Hibon

PRODUCER

Bart Yates

PRODUCTION COMPANY

Blinkink

ANIMATION BY CHASE ANIMATION STUDIOS LTD.**SCRIPT**

Jonathan Ashley

Ben Hibon

Bart Yates

(With Assistance from Mark Green and James Shepherd)

CHARACTER CONCEPTS

Alessandro “Talex” Taini

PRODUCTION MANAGER

Robert Chandler

LEAD ANIMATOR

Laura Thomas

ANIMATORS

Jimeno Fartan

LEAD COMPOSITION

Tom Baker

Linda Kalcov

COMPOSITORS

Billy Elliot

SOUND DESIGNER

Jonathan Klahr

TriCOAST STUDIOS

Culver City, California

EXECUTIVE PRODUCERS

Marcy Levitas Hamilton
Strathford Hamilton

POST PRODUCTION

Executive Producers

Nancy Blacker

John Purdie

Clive Anderson

Main & End Title Design

Luc Delamare

Color Timing

Andrew Balis

Online 2K Editor

Nicholas D. Johnson

Assistant Editor

Christopher Redman

Supervising Sound Editor

Andrew Williams

ADR Recording

Steven Tarabokia

ADR Editing

Andrew Williams

Editorial

Alex McDonnell

Sound Effects Editing

Sandy Gendler

Philip Raves

Brian Ohara

Foley Recording

Steven Tarabokia

Loop Group

Bagel's Friends

Re-recording Mixer

Andrew Williams

Post Production Accountant

George Keller

DCP Mastering

Nicholas D. Johnson

EPK Director

Cassandra Lee Hamilton

‘Financing Arranged by Film Financial Services’

Partial Financing Provided by Sansoo Ventures, Inc.

SPECIAL THANKS

All of the folks at Ninja Theory, Ltd and Sony Computer Entertainment (including SCEE and SCEA), Andrew House, Shuhei Yoshida, Jim Ryan, Jack Tretton, Kenya Foxhoven, Jane Wohl, Mignonne Munroe, Connie Booth, Asad Qizilbash, Ed Labowitz, Robert Nau, Rocky Curby, Brian Selzer, Tim Gilmore, Yvette Ciaramilaro, Tim Curtis, Leslie Hoffman, Nick Bennison, Helen Jen, Guillermo Gonzalez, Leigh Rens, Bill Kroyer, Lisa O'Brien, Anthony Washington, Michael Kirschbaum, Dave Barclay, Dave Breaux, Keith Boesky, David Keller, Juan Sanchez, Dean MacKay, Soo Mi, John Hughes and the team at Rhythm & Hues, David Eddings and the team at Gearbox Software.

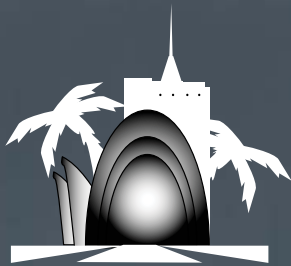
Special Thanks to the BUSAN FILM COMMISSION, KOCCA (Korea Creative Contents Agency)

“This film is dedicated to the memory of Keith Hunter. His guidance and support helped make this film possible.”

Copyright Heavenly Sword Productions, LLC

“PlayStation” and the “PS” Family logo are registered trademarks of Sony Computer Entertainment Inc.

Heavenly Sword ©2013 Sony Computer Entertainment Europe. Heavenly Sword is a trademark of Sony Computer Entertainment Europe. All rights reserved.



TRICOAST
WORLDWIDE

www.TriCoastWorldwide.com